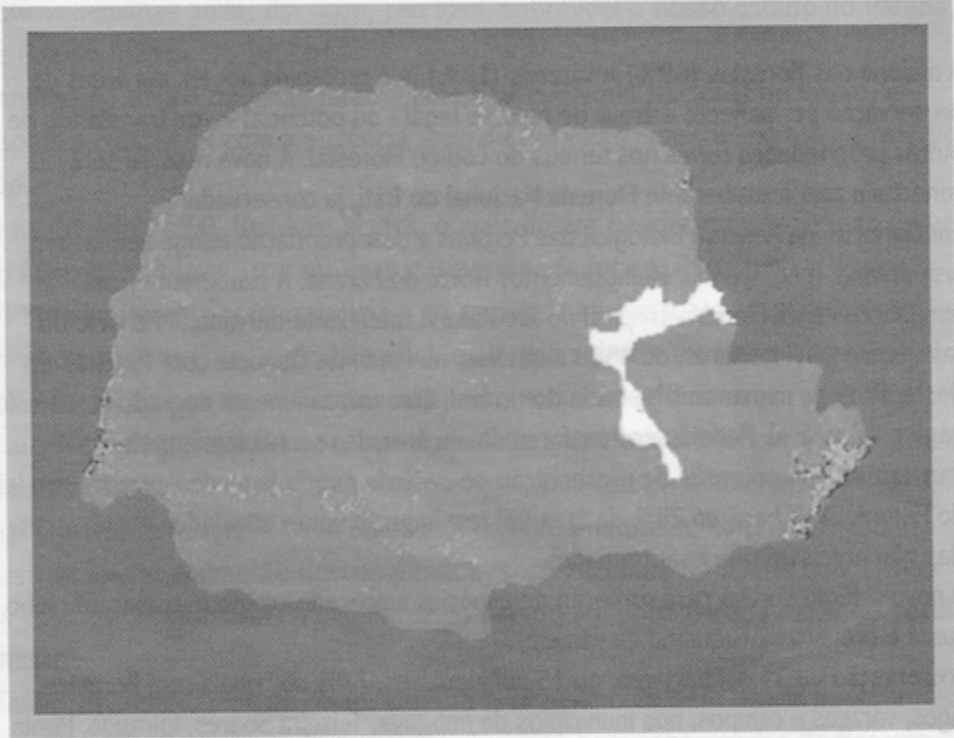


**CENSO DEMOGRÁFICO DO ESTADO DO PARANÁ**

1872	126.722
1890	249.491
1900	327.136
1920	685.711
1940	1.236.276
1950	2.115.547
1960	4.296.375
1970	6.929.821
1980	7.629.849
1991	8.448.713
2000	9.558.454
2005	10.261.856*

Fonte IBGE

\*Estimativa



Paraná: 1500

■ Florestas   ■ Mangue - Restinga - Banhados   □ Campos

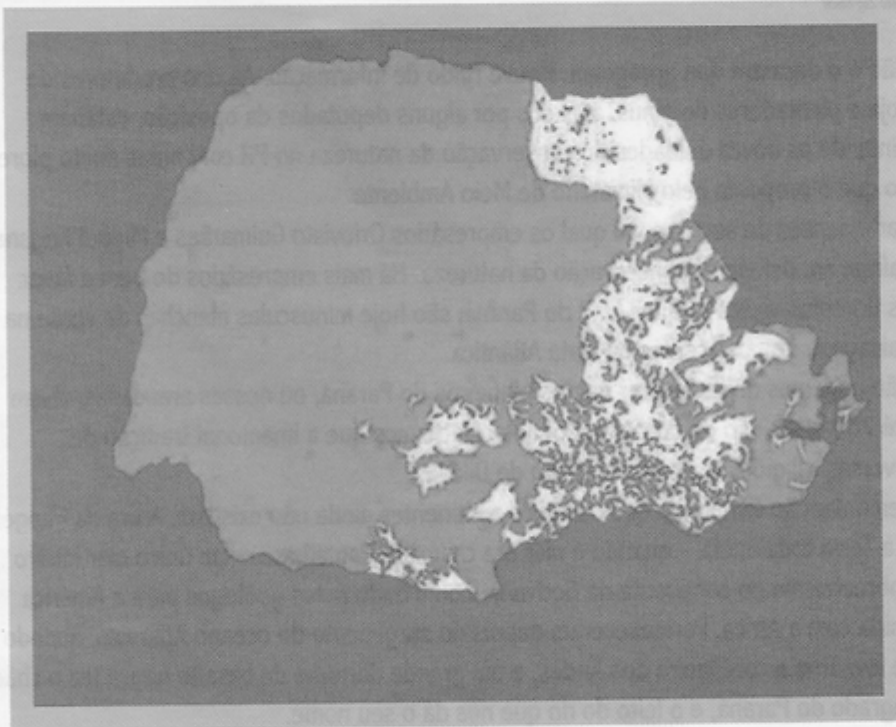
### CENSO DEMOGRÁFICO

1920

685.711

1940

1.236.276



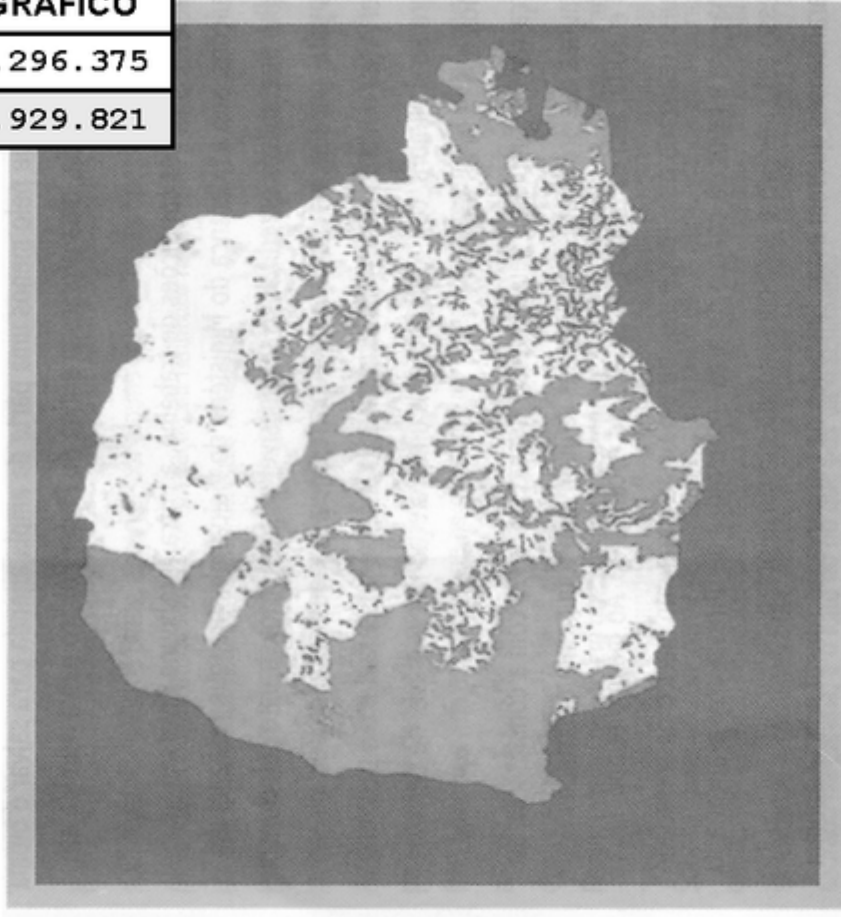
Paraná: 1930

■ Florestas   ■ Mangue - Restinga - Banhados   □ Campos

# CENSO DEMOGRÁFICO

1960 4.296.375

1970 6.929.821



Paraná: 1965



Florestas



Mangue - Restinga - Banhados



Campos

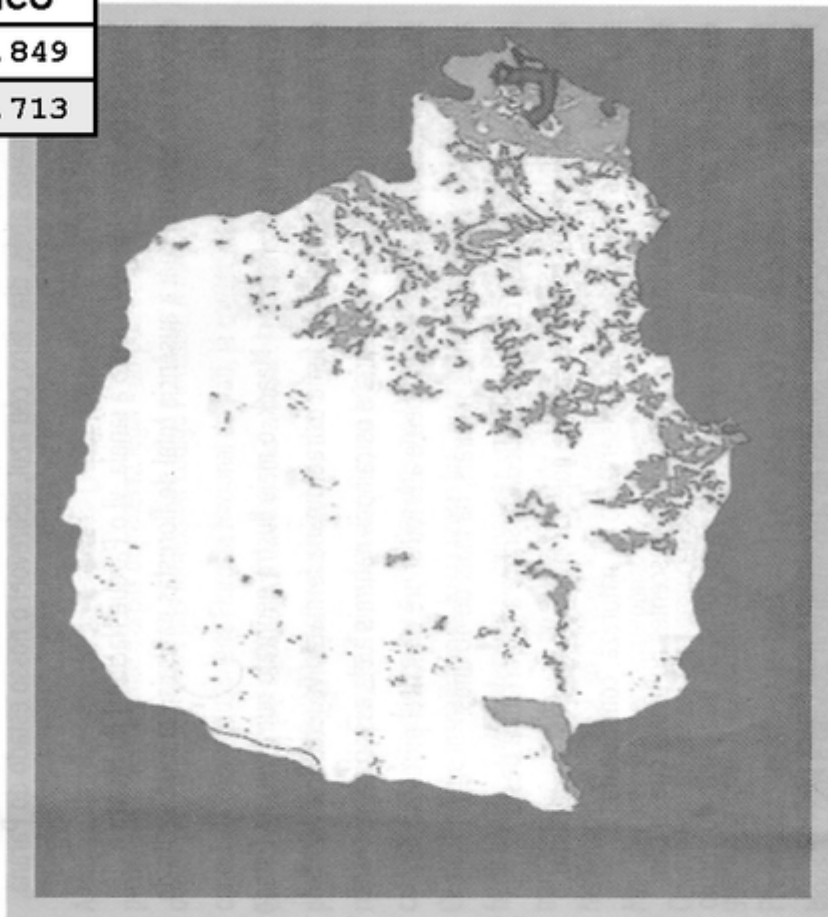
**CENSO DEMOGRÁFICO**

1980

7.629.849

19910

8.448.713



Paraná: 1990



Florestas



Mangue - Restinga - Banhados



Campos